



- ✓ 5 Box Seals
- ✓ Active Tunnel
- ✓ 3 weeks

## HydraTite® Internal Joint Seal

### Market

Power Plant

### Challenge

The challenge was groundwater infiltrating into a coal conveyor tunnel. The infiltration was at the joint of a concrete foundation in the tunnel. Damage from the water infiltration inside the tunnel was evident in the uneven settling of concrete sections. The water inside the tunnel also could damage equipment and was a slipping hazard for workers.

### Engineered Solution

To eliminate the infiltration, of water into the tunnel the HydraTite Box Seal was proposed as a solution. The HydraTite Box Seal is a customized mechanical remediation with no excavation required. The HydraTite Box Seal's flexibility accommodates ground settling and expansion/contraction. The seals superior quality and intricate design assures a tight and leak free seal.

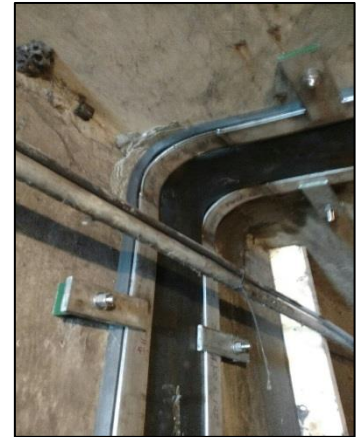
### Scope

Surface prep included moving conduits, relocating beams for the conveyor system and removing grout ports. Chipping and scraping of the existing joint surface to create a clean surface for a watertight install. Due to the slope inside the tunnel, concrete corners instead of steel forms were used.

The straight sections of the HydraTite seal are equipped with anchor clips.

### Solution

Once surface prep was completed, 5 box seals were installed. One seal was in an active conveyor tunnel and one was in an inactive conveyor tunnel. The other 3 were in an access tunnel. The Box seal for the active tunnel was installed during an outage, as it was a critical work item. The job was completed in approximately 3 weeks time and eliminated all infiltration.



HydraTech Engineered Products LLC

10448 Chester Road, Cincinnati, OH 45215 Phone (513) 827-9169 Fax (513) 827-9171  
www.hydratechllc.com