

PolySpray

Market

Storm Water / Ohio DOT

Challenge

Located in Northwest Ohio, an 11'7" x 7'5" structural plate storm culvert was in need of repair and rehabilitation. The corrugated pipe arch structure ran under Interstate 70 eliminating the option to replace. The selected repair system or lining had to be applied in situ and was required to eliminate corrosion, maintain hydraulics and preserve the existing structural integrity.

Engineered Solution

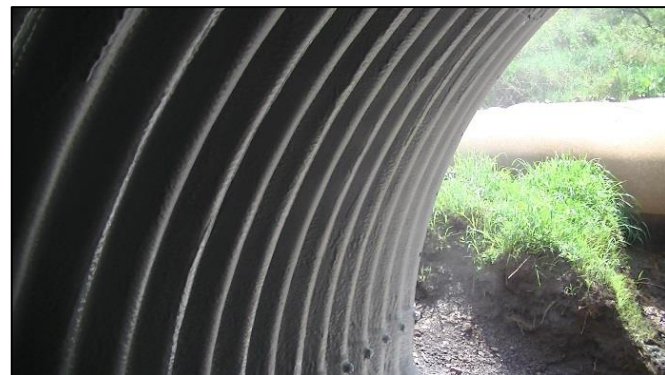
The Ohio DOT decided to repair the storm culvert using a spray applied resin system. The scope required the rehabilitation of approximately 214 feet of a pipe arch with a span of 11'7" and a rise of 7'5". PolySpray SS100 was included in the ODOT project specifications.

Scope

The contractor removed all debris, prepared the surface with an abrasive blast, and sprayed the pipe arch with PolySpray SS-100.

Solution

The rapid setting, semi structural, monolithic coating provides moderate structural support to host the structure, as well as excellent resistance to incidental chemical exposure. This lining system will extend the life of the pipe arch, did not impede any highway traffic, and will not hinder hydraulic performance.



PolySpray

HydraTech Engineered Products LLC

10448 Chester Road, Cincinnati, OH 45215 Phone (513) 827-9169 Fax (513) 827-9171
www.hydratechllc.com