



INTERNAL PIPE

HydraTite®

JOINT SEAL

Market

Power & Utilities

Challenge

Power plant personnel had determined that a flume had begun to leak. The water stop in the joint had failed in the flume that transferred water from the plant's condenser to the cooling tower. Previous repair attempts failed to eliminate the leak that was allowing exfiltration to the ground surface. The reinforced concrete flume's interior dimensions were 5' by 5' with the top corners of the flume having a 45-degree chamfer which reduced the top to 4'. The failing joint had approximately 4' of overburden soil.

Engineered Solution

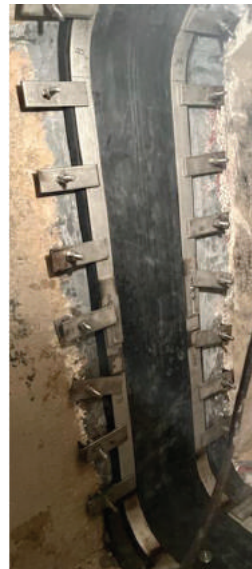
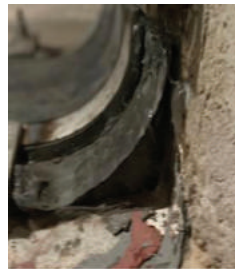
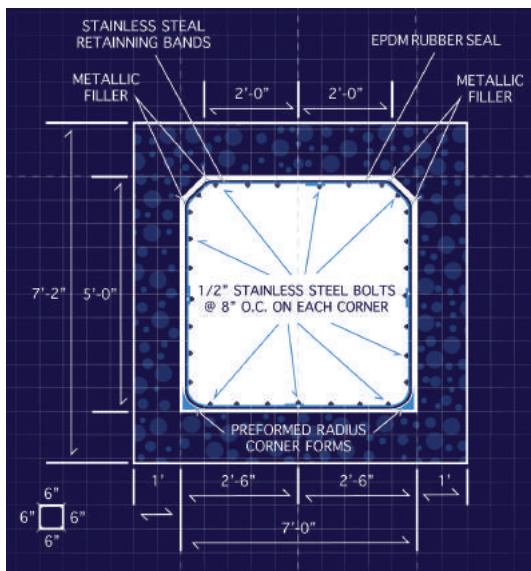
The engineer searched for a repair that would eliminate the leak and HydraTite's customizability made it the preferred solution. HydraTite could accommodate the irregular shape of the flume when installed with metallic filler in the top corners, preformed radius corners in the 90-degree bottom corners, and anchor clamps.

Scope

The power plant personnel completed the surface preparation and installation of the extra-wide HydraTite seal during the scheduled outage.

Solution

HydraTite proved to be an effective solution that eliminated the leak quickly and economically. This customized solution will protect this flume's joint for decades.



HydraTech Engineered Products, LLC

HydraTech Field Services, LLC

10448 Chester Road, Cincinnati, Ohio 45215 Phone: (513) 827-9169 Fax: (513) 827-9171

<https://hydratechllc.com>

<https://hydratechllc.com/services/field-services/>