



INTERNAL PIPE

HydraTite®

JOINT SEAL

Market:
Water/Irrigation

Challenge:

Determine a solution to seal the transition between concrete formed inlet and outlet headways and the 13 ft diameter reinforced concrete pipe. The joints were located on the down slope and up slope of the siphon and would be exposed to high velocity flow.

Engineered Solution:

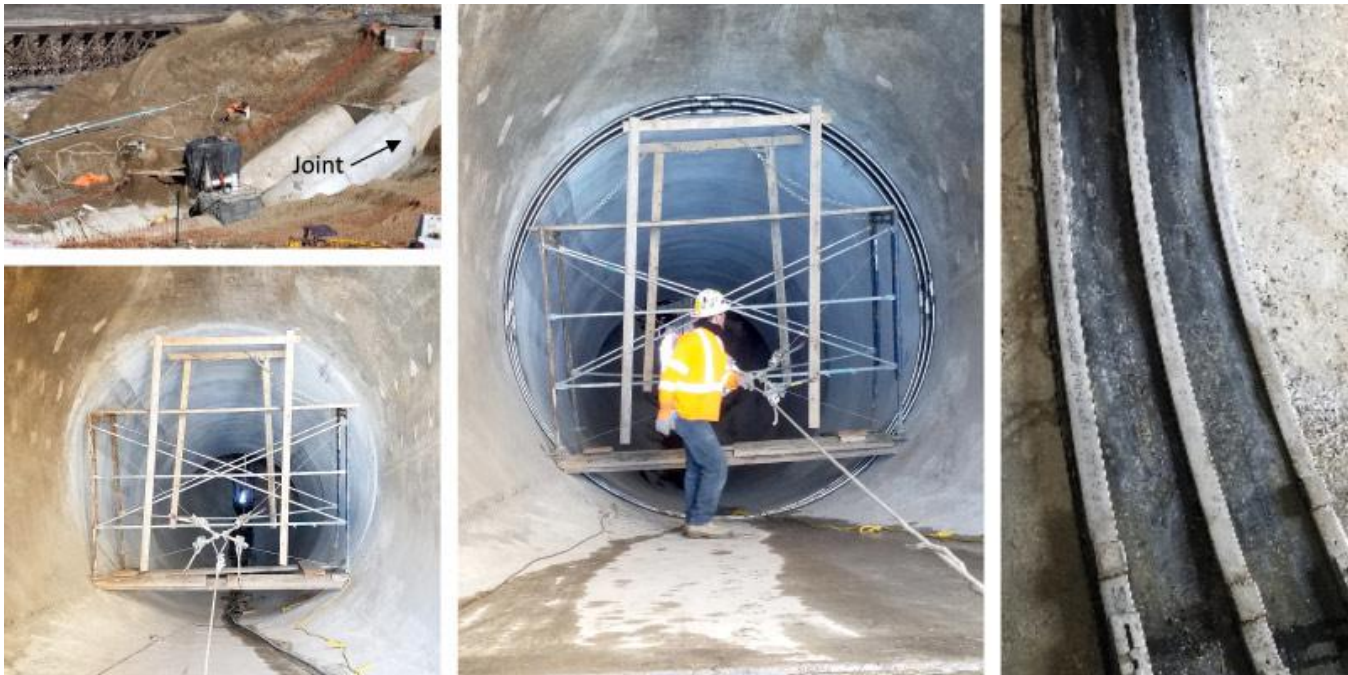
Internal joint seals using EPDM rubber membrane and stainless steel retaining bands were specified for installation at the connections.

Scope:

The project included 2 joints located at the transition of the 13 ft diameter siphon to the inlet and outlet flumes for providing additional measures to prevent the possibility of leaks.

Solution:

To eliminate the potential for leaks, the HydraTite seal was chosen for installation at each transition. The application required the use of multi piece retaining bands to accommodate the required expansion of the EPDM rubber seal. Each internal seal was installed in one eight (8) hour work day. After installation, the joints were air tested to ensure they were leak free.



HydraTech Engineered Products, LLC
HydraTech Field Services, LLC

10448 Chester Road, Cincinnati, Ohio 45215 Phone: (513) 827-9169 Fax: (513) 827-9171

<https://hydratechllc.com>

<https://hydratechllc.com/services/field-services/>