

# HydraTech HydraLock

Internal Joint Sealing System for Non-Man-Entry Pipe Sizes

Issue 1.22

## PRODUCT DESCRIPTION

- HydraLock Internal Joint Seal is a mechanical, trenchless remediation for repair of pipe joint in non-man-entry sized piping.
- The HydraLock system consists of a EPDM rubber seal which spans the joint and is held in place by a stainless steel sleeve.
- The stainless steel sleeve is locked in place with a ratchet style locking mechanism.
- The HydraLock produces a water tight seal on either side of the joint eliminating infiltration and exfiltration.
- Each HydraLock seal is designed and custom made for each application to ensure complete compliance with project specifications.
- The HydraLock is designed to comply with ASTM F3110.

## ADVANTAGES

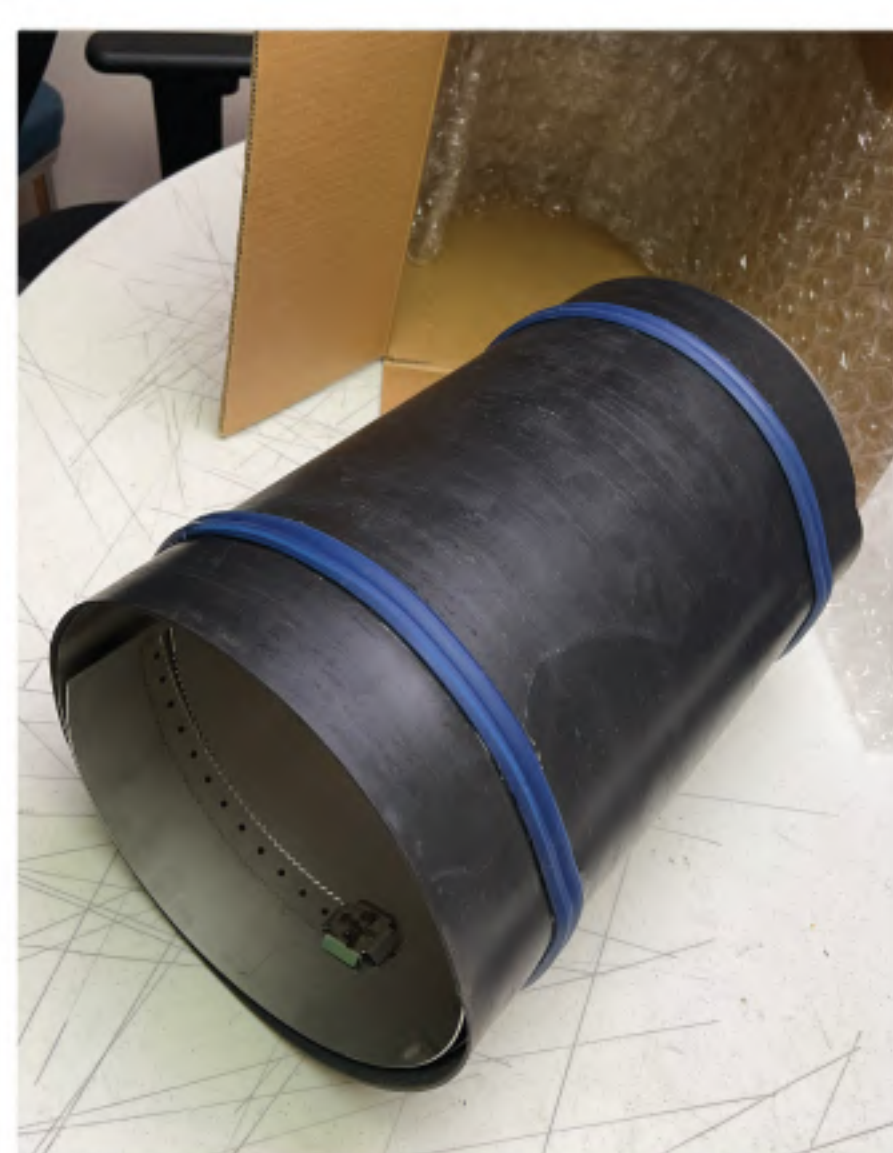
- Mechanical Trenchless Remediation
- Maintenance free
- Low profile ensures minimal flow loss
- Rapid installation and return to service ideal for immediate or emergency situations
- Seal Flexibility accommodates misalignment and movement
- Non-corrosive components
- Design Flexibility provides an ideal remediation for multiple applications
- Installed with mechanical packers or inflatable pipe plugs
- Full contract support services available

## APPLICATIONS

Joint Repair  
 Seal Off Abandon Laterals  
 Repair Point Defects

## MARKETS SERVED

Waste Water  
 Storm Water  
 Industrial



## HYDRALOCK DESIGN

**RUBBER SLEEVE** • EPDM Tubing, 40 Durometer and 0.08" wall thickness. Applicable for use in storm water, waste water, and most service water applications. Alternate rubber compounds may be available. Tubing diameter manufactured to specific pipe diameter application. NBR tubing seals may also be provided for applications subject to oil, gas, and petroleum related service.

**O-Rings** • Hydrophilic rings designed to outer diameter of the rubber sleeve. Enhances sealing capabilities at the ends of the assembly.

**STEEL JACKET** • The stainless steel sleeve and all associated steel parts are manufactured with 316L stainless steel. Steel jacket incorporates a proprietary locking mechanism which locks seal in place when limit of expansion is achieved.

**DIAMETERS** • The HydraLock System is available for pipe diameters from 8 inches to 20 inches.



# HydraTech HydraLock

Internal Joint Sealing System for Non Man Entry Pipe Sizes

Issue 1.22

## INSTALLATION



1. Install Packer's Wheel Assembly



2. Slide HydraLock Over Packer



3. Install Packer's Rear Wheel Assembly



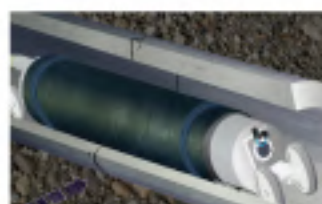
4. Install Camera On Packer (Optional)



5. Ensure That Toothed Strip Is Facing Up



6. Inflate Packer To Immobilize HydraLock



7. Align HydraLock With Repair Location



8. Expand Packer



9. Deflate Packer & Remove it from the Pipe

## SYSTEM PROPERTIES

Operating Pressure	220 psi
Max Operating Temp	250 °F
Head Pressure	23 psi ( 10 ft )

## EPDM

Durometer Shore A	ASTM D2240	40 +/- 5
Tensile Strength (min)	ASTM D412	2000
% Elongation (min)	ASTM D412	800

## STAINLESS STEEL

Properties	316L
UNS Designation	S31603
Tensile Strength (min)	70,000 psi
Yield Strength (min)	25,000 psi
Elongation (min)	40%
Brinell Hardness (max)	217

The HydraTech HydraLock System is a performance driven product that provides a mechanical, trenchless remediation for the interior of pipe. The HydraLock system is backed by our engineering staff that services each installation with assessments, solutions, and technical support. The HydraLock system offers a proven, efficient, cost effective, long term solution to the most challenging demands of the industry.



NOTE: This example is rotated to make the toothed strip and locking mechanism visible. Installation requires these components to be at the crown of the pipe.